

# Install OptiACCESS with an Isatphone in USB

**Important:** Update your computer before installing OptiACCESS.

## 1. Install the IsatPhone USB drivers

Go on our website to download the drivers : <https://downloadcenter.iec-telecom.com/>

Select Inmarsat / IsatPhone 2/ Firmware Update Tools

It is the same drivers for IsatPhone Pro and 2.

### **Inmarsat IsatPhone 2 USB Drivers**

For Windows

Unzip the file and run the installer. Follow the instruction and your phone will be able to communicate with your computer.

Connect the shutdown phone via USB to your computer and turn it on.

**Also, please, always plug your phone to the same USB port on your computer, otherwise the COM port won't be the same.**

## 2. Register OptiACCESS

- Use this link to download OptiACCESS : <https://downloadcenter.iec-telecom.com/>, select OptiACCESS.
- Select < **OptiACCESS for Windows** > and save the file on your computer.
- Unzip the file.
- Launch **OptiACCESS-setup.exe**. Follow the instructions.

When you first start OptiACCESS, the registering wizard will offer you to create and register your Optiaccess account. You can find it in < **Program** > < **Registration Wizard** > later.

(If you **already** have an OptiACCESS account and password, go to < **Enter User ID and Password** > and enter them)

To create your account use one of the methods bellow

- ✦ **New Account Using Activation Code:** Use this method if you have an activation code. Your computer need to be connected to Internet via ADSL or WIFI and not a satellite connection.

---

a) Select < **Network Connection** > to use your internet connection.

- Click on **<Next>**
- b) Click on **< I have read and agree... >** then **< OK >**
  - c) Fill the registering datasheet. You need to use a current email address to receive the account creation confirmation email.
  - d) **< Preferred User id >** and **< Alternate User id >** must contain between 3 and 16 characters.
  - e) The password must contain between 6 and 16 characters.  
It can contain Capital and Minuscule letters, numbers, comas, dash and underscore.  
Consider that the username and password must not be the same.
  - f) Click on **< Finish >**, then wait for the account creation confirmation. You will also receive the information with the email confirmation.

Important: if the **< Preferred User Id >** isn't available, the **< Alternate User Id >** will be used.

**It is also possible to create your OptiACCESS account on IEC Telecom website. You will need an activation code. It will allow you to create your account in advance from home:**

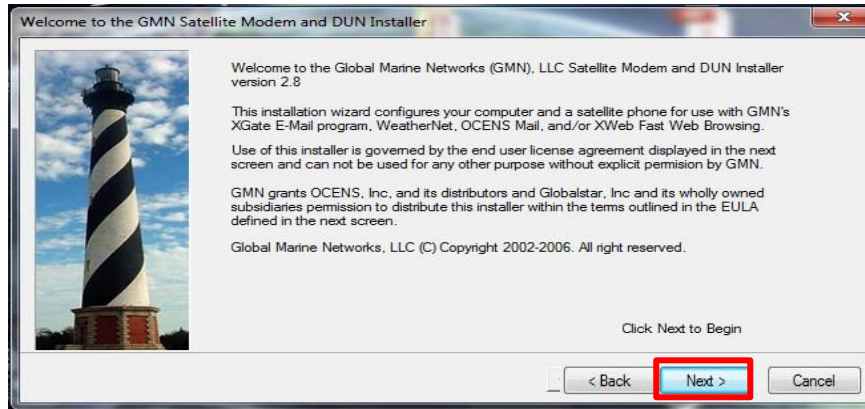
- a) Open the OptiACCESS account registration webpage: <https://optiaccess.gmn-usa.com/reg/index.php>
  - b) Fill the sheet.  
You need to use a current email address to receive the account creation email confirmation.  
**< Preferred User id >** and **< Alternate User id >** must contain between 3 and 16 characters. If the **< Preferred User Id >** isn't available, the **< Alternate User Id >** will be used.  
The password must contain between 6 and 16 characters.  
It can contain Capital and Minuscule letters, numbers, comas, dash and underscore.
  - c) Click on **< View Terms >** to read the Usage terms.
  - d) Select **< Accept Terms and Submit >**
  - e) Wait for the account creation confirmation.
  - f) Open OptiACCESS, select the menu **<Options>**, **<Settings>** and enter your account Username and Password.
- ✦ **DEMO ACCOUNT:** Don't use this function. Ask your salespeople for a 3 days demo account creation code instead.
- ✦ **New Account using credit card:** Not available.
- ✦ **Enter User ID and Password** (if you already have and OptiACCESS account).
- a) Select **<Network Connection>**. Click on **<Next>**
  - b) Enter your account information, click on **<Ok>**, then **<Finish>**.

### 3. Make OptiACCESS and your IsatPhone communicate

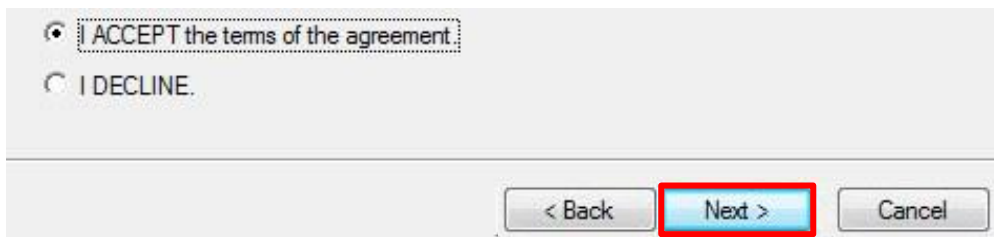
Connect your IsatPhone to your computer phone via USB and turn it on.

Go to the C:\Program Files\IEC\OptiACCESS Mail folder.

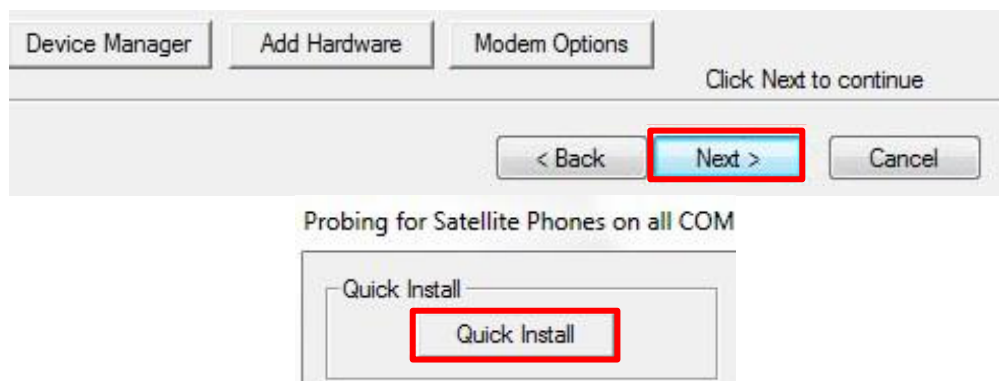
You will find the < DUNSETUP.EXE > program. Run it and click on <NEXT>:



Accept the terms of the agreement and click on <NEXT>:

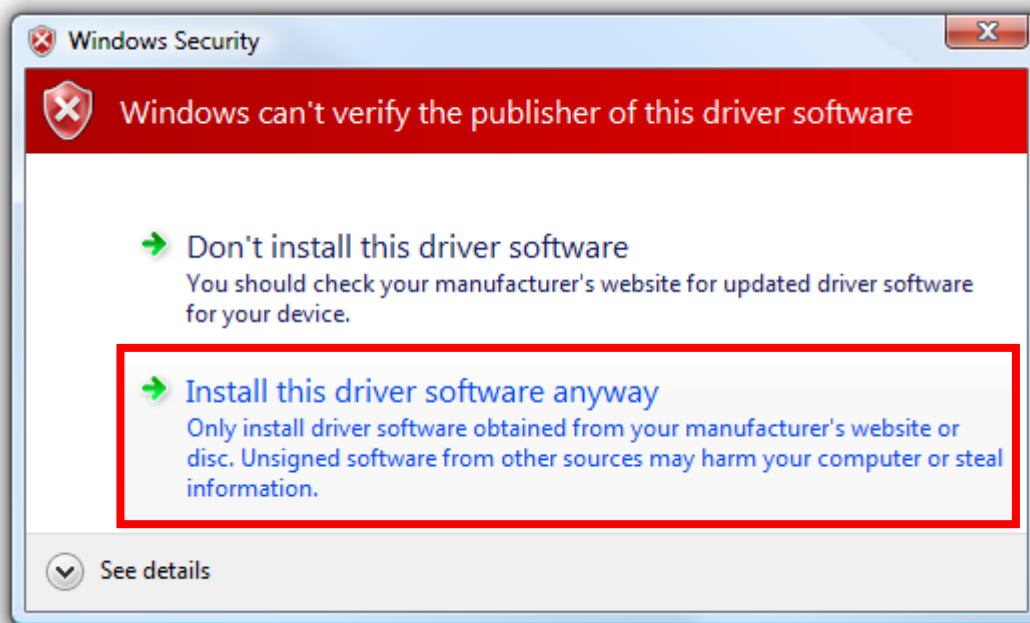


Click on <NEXT> and then <Quick Install >:

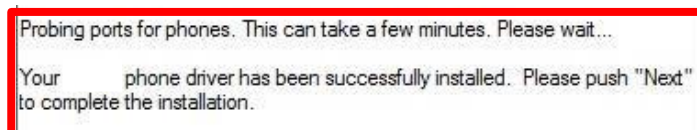


#### If Quick install works:

The software will search for your phone on the computer. For this to work, the phone needs to be connected to the computer and turned on. The phone search can last several minutes. If < **Windows can't verify the publisher of this driver software** > click on < **Install this driver anyway** >.

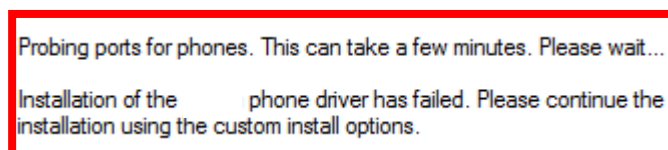


Click on <Ok> when the following message appears:

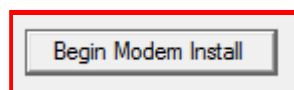
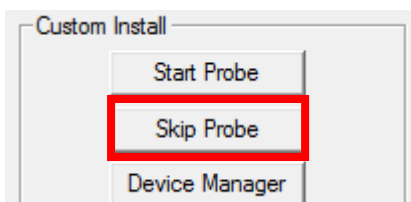


### If Quick Install doesn't work:

The following message will be displayed:



Click on < Skip Probe >, then < Begin Modem Install >, then < Next >.



The < Phone and Modem options > will be displayed click on < IsatPhone 2 Modem >.

Click on < **Finish** >. On the < **Install Modem Windows** >, click on < **Next** >, then select < **GMN Inmarsat** > for < **Select Service Provider** > and < **IsatPhone 2 Modem** > for < **Select Modem** >. Click on < **Next** > and < **Finish** >.

## 4. Manage the DATA connexion

Ouvrez OptiACCESS. Allez dans < **Options** >, < **Settings...** >, < **Connection** >.

For < **Default Connection** >, select < **GMN Inmarsat** > and < **Inmarsat** > for < **Type** >. Then click on < **OK** > then < **Start** > to start the connection.

**Don't fill the other fields.**

OptiACCESS will open the Iridium data connection to send and receive email and close it when finished.

If you want to use OptiACCESS with a ADSL or Wifi connection, you just need to use < **Network Connection** > as < **Default Connection** > and < **Type** >.

## 5. Emails

OptiACCESS main function is to send/receive emails.

To consult and write your emails, click on the **email** button. The i.Scribe email app will open. When you use i.Scribe to send an email, it is sent to OptiACCESS **spool** and really sent when you need click on OptiACCESS **START** button.

If you want to send emails via OptiACCESS created by other apps like Weather 4d, SQUID or SailGrib please open i.Scribe then:

1. Click on File/Options
2. Open the General Settings, select **Register as default Windows Email Client** and Check **default Email Client on start-up**. Click on OK.
3. Quit i.Scribe and search **Default apps** in windows search menu. In email select i.Scribe.

To do that you will download and run Mozilla Thunderbird: <https://www.mozilla.org/en-US/thunderbird/#>

To receive and send emails don't forget you need to click on OptiACCESS START button.

## 6. Weather forecasting software – GRIB files

OptiACCESS contain the free weather forecasting software Predictwind.



1. From OptiACCESS click on the  button
2. When Predictwind is open, click on < **GRIB Offshore** > and select the area covering the Weather Forecasting you need.
3. Click on < **Download** >.

4. Select the following options:
  - ✦ GRIB Offshore GFS (NOT PWG: GFS is freely available, but PWG, is not)
5. When you have selected the options you need, you will need to select the GRIB file retrieval mode. Select: < **OptiACCESS SMTP** > and click on < **Send Request** >. An email with your GRIB file request is stocked in OptiACCESS < **Spool** >.
6. Return to OptiACCESS and click on start to launch the GRIB file request.
7. Wait 5 minutes then click on < **START** > again. You will receive a new email containing your GRIB file.
8. Open Thunderbird. Open the email from < [offshore@predictwind.com](mailto:offshore@predictwind.com) >.
9. You can register the GRIB file and go to Predictwind.
10. Click on File/Open and select your grib file.

Beware: Clicking on **START opens the DATA connection** and lead to airtime communication usage.

To use other forecasting software you will need to add Thunderbird as default Email program on your computer.