

Iridium Direct Internet

Powered by Riverbed[®] SteelHead[™] Mobile

Install Guide for Windows[®] 7 & 8.1 and Mac OS X[®]

Notice

Export Compliance:

This product is controlled by the export laws and regulations of the United States of America. The U.S. Government may restrict the export or re-export of this product to certain individuals and/or destinations. For further information, contact the U.S. Department of Commerce, Bureau of Industry and Security or visit www.bis.doc.gov.

Legal Notices

This Install Guide provides user information and is provided “as is.” Iridium Satellite LLC and its affiliated companies, directors, officers, employees, agents, trustees or consultants (“Iridium”) assume no responsibility for any typographical, technical, content or other inaccuracies in this Install Guide. Iridium reserves the right to revise this Install Guide or withdraw it at any time without prior notice. You can find the current version of this Install Guide at www.iridium.com.

IRIDIUM MAKES NO REPRESENTATIONS, GUARANTEES, CONDITIONS OR WARRANTIES, EITHER EXPRESS OR IMPLIED, INCLUDING WITHOUT LIMITATION, ANY IMPLIED REPRESENTATIONS, GUARANTEES, CONDITIONS OR WARRANTIES OF MERCHANTABILITY AND FITNESS FOR A PARTICULAR PURPOSE, NON-INFRINGEMENT, SATISFACTORY QUALITY, NON-INTERFERENCE, ACCURACY OF INFORMATIONAL CONTENT, OR ARISING FROM A COURSE OF DEALING, LAW, USAGE, OR TRADE PRACTICE, USE, OR RELATED TO THE PERFORMANCE OR NONPERFORMANCE OF ANY PRODUCTS, ACCESSORIES, FACILITIES, SERVICES OR USER INFORMATION, EXCEPT AS EXPRESSLY STATED IN THE LIMITED WARRANTY. ANY OTHER STANDARDS OF PERFORMANCE, GUARANTEES, CONDITIONS AND WARRANTIES ARE HEREBY EXPRESSLY EXCLUDED AND DISCLAIMED TO THE FULLEST EXTENT PERMITTED BY LAW. THIS DISCLAIMER AND EXCLUSION SHALL APPLY EVEN IF THE EXPRESS LIMITED WARRANTY PROVIDED IN THE IRIDIUM DIRECT INTERNET INSTALL GUIDE FAILS OF ITS ESSENTIAL PURPOSE. FURTHER, THE LIMITED WARRANTY COVERS RIVERBED STEELHEAD MOBILE (INCLUDING HARDWARE, SOFTWARE AND/OR FIRMWARE) AND ACCESSORIES ONLY, AND NO WARRANTY IS MADE AS TO USER INFORMATION AND/OR COVERAGE, AVAILABILITY OR GRADE OF SERVICE PROVIDED BY IRIDIUM SEPARATELY FOR IRIDIUM SATELLITE SERVICES. IN NO EVENT SHALL IRIDIUM BE LIABLE, WHETHER IN CONTRACT OR TORT OR ANY OTHER LEGAL THEORY, INCLUDING WITHOUT LIMITATION STRICT LIABILITY, GROSS NEGLIGENCE OR NEGLIGENCE, OR IMPLIED WARRANTY, FOR ANY DAMAGES IN EXCESS OF THE PURCHASE PRICE OF RIVERBED STEELHEAD MOBILE (INCLUDING HARDWARE, SOFTWARE AND/OR FIRMWARE) AND/OR ACCESSORIES AND/OR THE COST OF IRIDIUM SATELLITE SERVICES PROVIDED, NOR SHALL IRIDIUM BE LIABLE FOR ANY DIRECT, INDIRECT, INCIDENTAL, SPECIAL, CONSEQUENTIAL, OR PUNITIVE DAMAGES OF ANY KIND, OR LOSS OF REVENUE OR PROFITS, LOSS OF BUSINESS, LOSS OF PRIVACY, LOSS OF USE, LOSS OF TIME OR INCONVENIENCE, LOSS OF INFORMATION OR DATA, SOFTWARE OR APPLICATIONS OR OTHER FINANCIAL LOSS CAUSED BY RIVERBED STEELHEAD MOBILE (INCLUDING HARDWARE, SOFTWARE AND/OR FIRMWARE) AND/OR ACCESSORIES AND/OR THE IRIDIUM SATELLITE SERVICES, OR ARISING OUT OF OR IN CONNECTION WITH THE ABILITY OR INABILITY TO USE RIVERBED STEELHEAD MOBILE (INCLUDING HARDWARE, SOFTWARE AND/OR FIRMWARE) AND/OR ACCESSORIES AND/OR THE IRIDIUM SATELLITE SERVICES, TO THE FULLEST EXTENT THESE DAMAGES MAY BE DISCLAIMED BY LAW

AND REGARDLESS OF WHETHER IRIDIUM WAS ADVISED OF THE POSSIBILITIES OF SUCH DAMAGES.

Third Party Information

This Install Guide might refer to third party sources of information, hardware or software, products or services and/or third party web sites (“third party information”). Iridium does not control, and is not responsible for, any third party information, including without limitation the content, accuracy, copyright compliance, compatibility, performance, trustworthiness, legality, decency, links, or any other aspect of third party information. The inclusion of such third party information does not imply endorsement by Iridium of the third party information.

ANY THIRD PARTY INFORMATION THAT IS PROVIDED WITH IRIDIUM’S FACILITIES, SERVICES, PRODUCTS OR USER INFORMATION IS PROVIDED “AS IS.” IRIDIUM MAKES NO REPRESENTATIONS, GUARANTEES OR WARRANTIES IN RELATION TO THIRD PARTY INFORMATION AND IRIDIUM SHALL NOT BE LIABLE FOR ANY LOSSES, DAMAGES, LIABILITIES, JUDGMENTS, FINES, AMOUNTS PAID IN SETTLEMENT, EXPENSES

OR COSTS OF DEFENSE SUSTAINED IN RELATION TO ANY SUCH THIRD PARTY INFORMATION.

Intellectual Property, Trade Secret, Proprietary or Copyrighted Information

To protect Iridium proprietary and confidential information and/or trade secrets, this Install Guide may describe some aspects of Iridium technology in generalized terms. Iridium products may include copyrighted Iridium and third party software. Any such copyrighted software contained in Iridium products may not be modified, reverse engineered, distributed or reproduced in any manner to the extent provided by law. The purchase of any Iridium products shall not be deemed to grant either directly or by implication or otherwise, any license under copyrights, patents, or patent applications of Iridium or any third party software provider, except for the normal, nonexclusive, royalty free license to use that arises by operation of law in the sale of a product.

Content Copyright

You are exclusively responsible for the use of Riverbed SteelHead Mobile, including proper use of third party copyrighted materials. If you violate these terms you agree to defend, indemnify and hold Iridium harmless with respect to any claims or actions by third parties related to your improper use of copyrighted materials and to pay all costs, damages, fines and other amounts incurred by Iridium, or on its behalf, in the defense of any such claims or actions.



Table of Contents

A. Overview	- 5 -
B. Important Considerations	- 5 -
C. Windows 7 Setup	- 6 -
❖ Install Riverbed® SteelHead™ Mobile on a computer	- 6 -
❖ Uninstall Riverbed SteelHead Mobile on a computer	- 11 -
D. Windows 8.1 Setup	- 12 -
❖ Install Riverbed® SteelHead™ Mobile on a computer	- 12 -
❖ Uninstall Riverbed SteelHead Mobile on a computer	- 18 -
E. Mac OS X Setup	- 19 -
❖ Install Riverbed® SteelHead™ Mobile on a computer	- 19 -
❖ Uninstall Riverbed SteelHead Mobile on a computer	- 24 -

A. Overview

Iridium's Direct Internet Service allows customers to connect directly to the Internet via the Iridium gateway. While users are not required to load any special software onto their computer to connect, they will find additional compression and speed benefits from installing the Riverbed SteelHead Mobile ("Riverbed"). However, the service utilizes standard dial-up networking and has been shown to work with a variety of operating systems. This documentation provides complete instructions on use.

The Iridium Direct Internet service is provided by the Riverbed software application and run through a Riverbed® Controller at the Iridium gateway. The application provides data reduction and acceleration for faster browsing using your Iridium phone as an Internet modem.

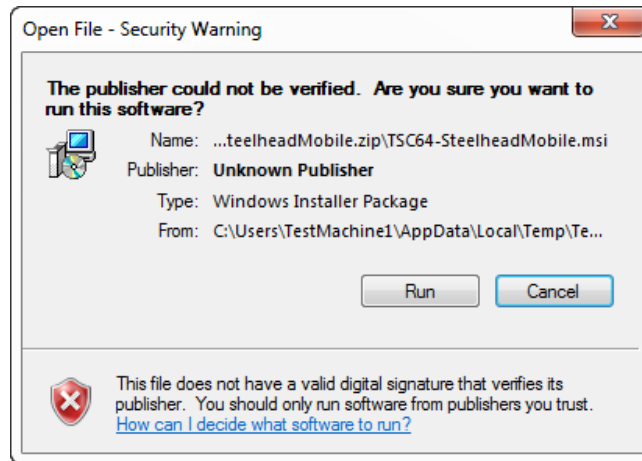
B. Important Instructions

- You should have your handset connected to the computer with the handset's data cable.
- You should have already installed the VCOMPORT driver for your handset.
- Occasionally, dialogs can open behind other open windows. If you have been on one step longer than 2 minutes, check behind any open windows to see if the next step is waiting behind it.
- **Operating Systems Supported by SteelHead Mobile Version 4.7:** Windows 7 (32 & 64 bit), Windows 8 (32 & 64 bit), 8.1 (64 bit), Mac OSX 10.8, 10.9 and 10.10
- Newer computer applications (i.e. Google Chrome, Apple Safari, Adobe products, etc.) will run updates in the background of the application attempting to connect to the internet. This will make your data connection slower and we recommend turning off Auto-Updates for all applications that connect to the internet to improve your data speeds.
- **Prior to installation if you have the Direct Internet Client for Version 3 (Slip Stream) installed on your computer please uninstall.**
- It is recommended that customers use a commercial FTP client such as Filezilla or WinSCP for file transfers.
- It is recommended to terminate all RUDICS connections prior to installing the new Direct Internet software.
- **Please perform a restart of your computer after installing the new software.**

C. Windows 7 Setup

❖ **Install Riverbed® SteelHead™ Mobile on a computer**

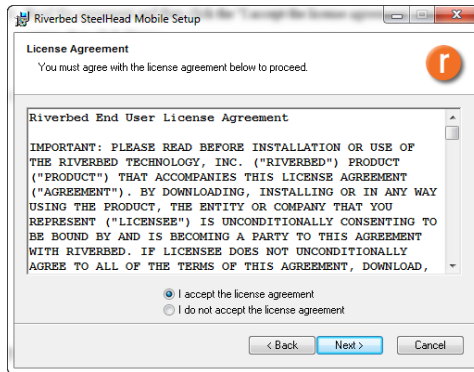
- 1) Launch the TSC64-SteelheadMobile.msi
- 2) Click *Run*



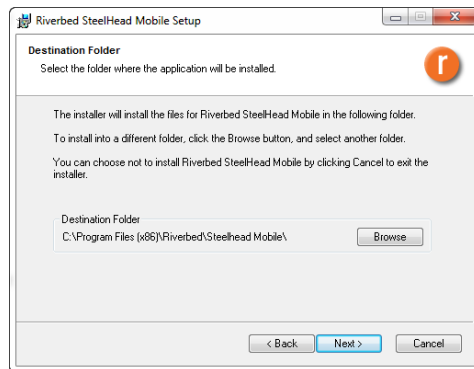
- 3) Once the *Riverbed SteelHead Mobile Setup* Window appears, click *Next >*



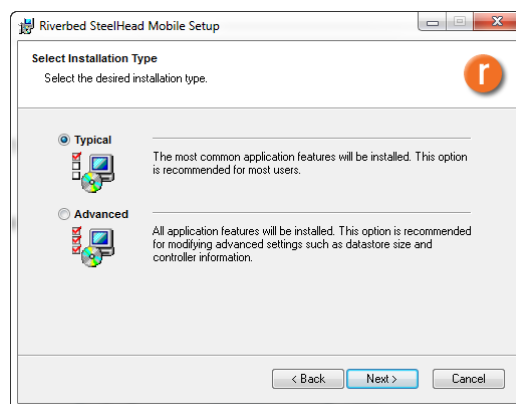
- 4) Read the agreement and then click the "I accept the license agreement" radio button, the first option, then click *Next >*



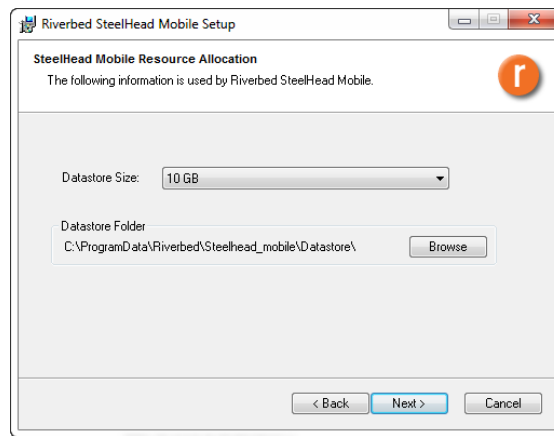
- 5) Confirm that the destination folder is appropriate, then click *Next >*. If the destination folder is inappropriate, then click *Browse >*. Choose the appropriate folder from the menu, click *Ok >*, then click *Next >*.



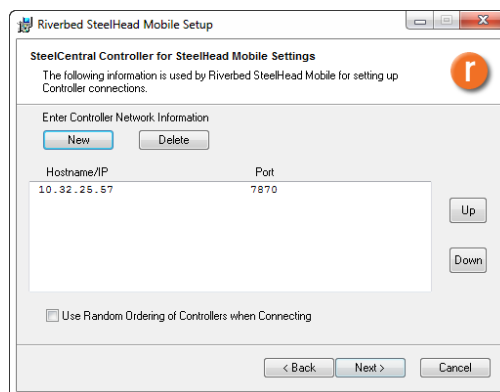
- 6) Choose your desired Installation type from the radio menu, click *Next >*.



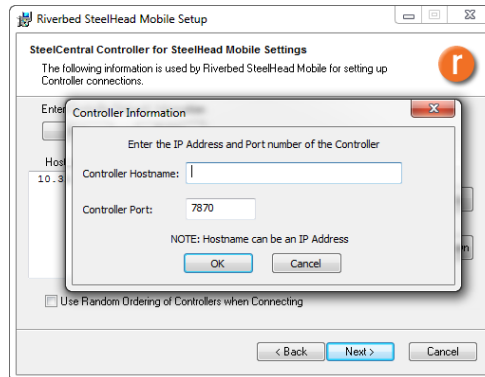
- *Typical Installation*
 - Jump to Step 7.
- *Advanced Installation*
 - Confirm that the destination folder is appropriate, then click *Next >*. If the Datastore folder is inappropriate, then click *Browse >*. Choose the appropriate folder from the menu, click *Ok >*, then click *Next >*.



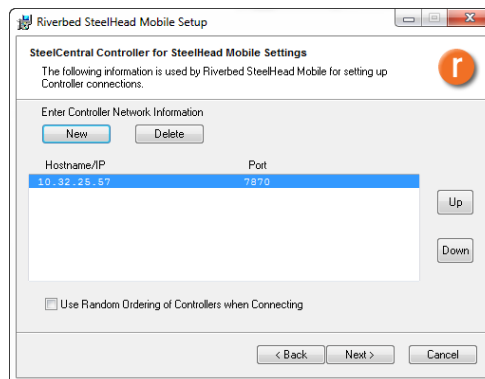
- Here you may choose to enter a *New* “Controller Network Information,” *Delete* an unwanted one, or take no action and click *Next >*.



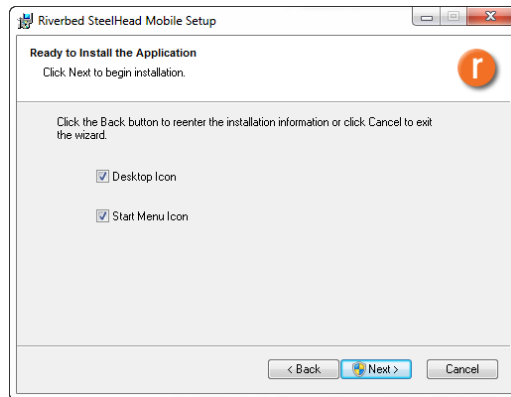
- To create a New Hostname: Click on *New*. Enter a “Controller Hostname” and then click *Ok*.



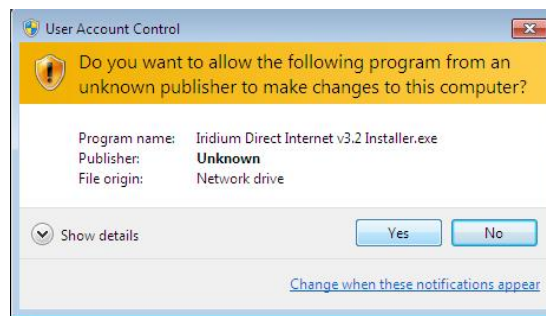
- To Delete an unwanted Hostname: Highlight a Hostname/IP line item. Click on *Delete*.



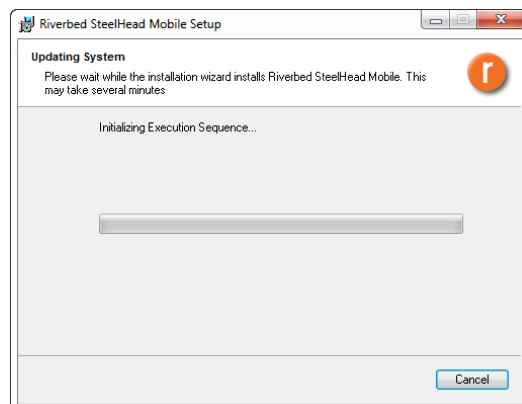
7) You may choose to select all, just one, or both options of shortcuts for the installed Riverbed



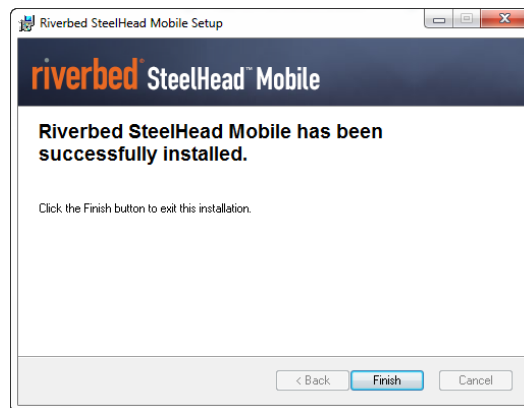
8) If User Account Control is enabled this window will appear, click **Yes**



9) This window shows the updating of sequencing and file copying for the Riverbed software on your system. If you need to stop this progression, then click **Cancel**.

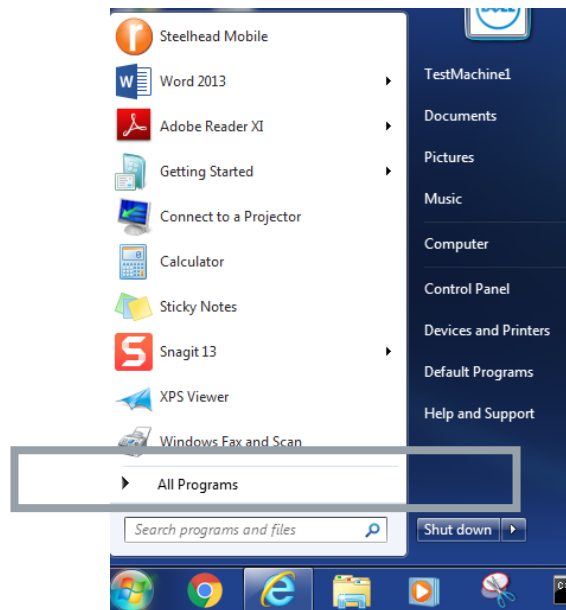


10) Once the System Update has completed, this window will appear. Click **Finish**.

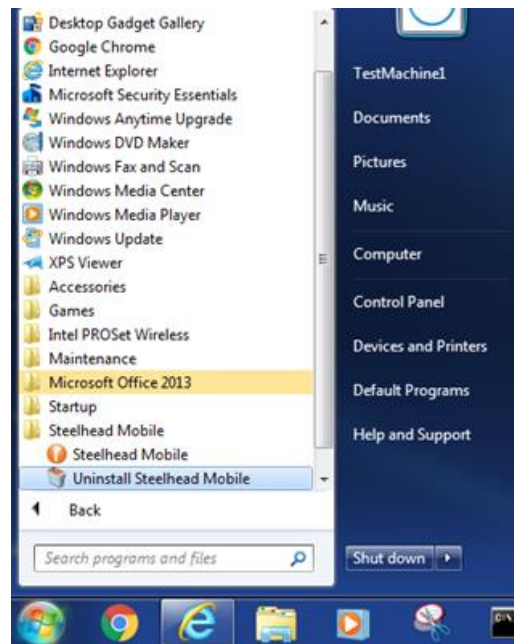


❖ **Uninstall Riverbed SteelHead Mobile on a computer**

- 1) To Uninstall the Riverbed SteelHead Mobile application from your computer click the **Start** button (or navigate to the **Start** screen) and click **All Programs**.



- 2) Click on the **SteelHead Mobile** application, then click **Uninstall SteelHead Mobile**.



D. Windows 8.1 Setup

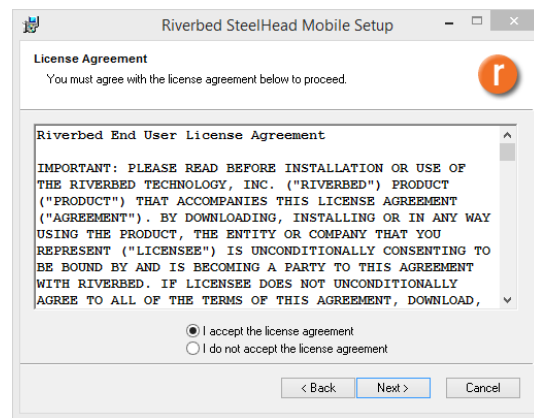
During any of the following steps you may be required several times to approve access by Windows UAC (User Account Control). When prompted, choose Allow.

❖ **Install Riverbed® SteelHead™ Mobile on a computer.**

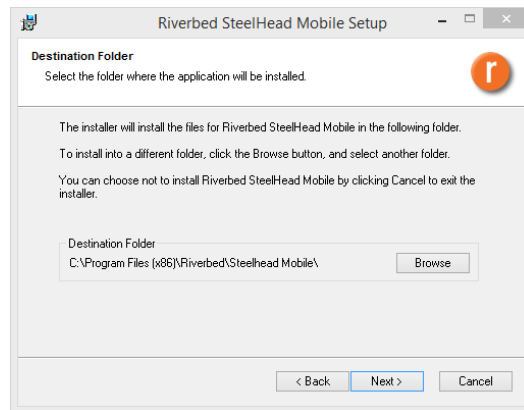
- 1) Launch the TSC64-SteelheadMobile.msi
- 2) A Windows message claiming to have prevented an unknown application from running on your computer will appear. Click *More* and then click *Run Anyway* >
- 3) Once the *Riverbed SteelHead Mobile Setup* Window appears, click *Next* >



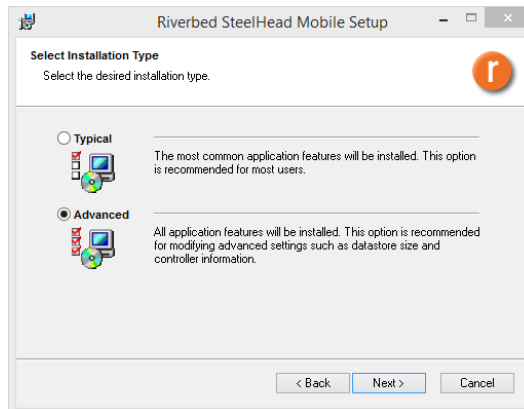
- 4) Read the agreement and then click the "I accept the license agreement" radio button, the first option, then click *Next >*



- 5) Confirm that the destination folder is appropriate, then click *Next >*. If the destination folder is inappropriate, then click *Browse >*. Choose the appropriate folder from the menu, click *Ok >*, then click *Next >*.



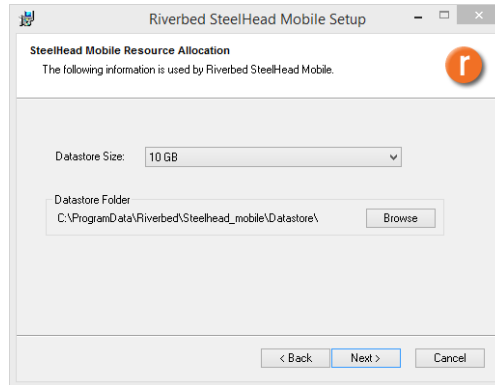
6) Choose your desired Installation type from the radio menu, click *Next >*.



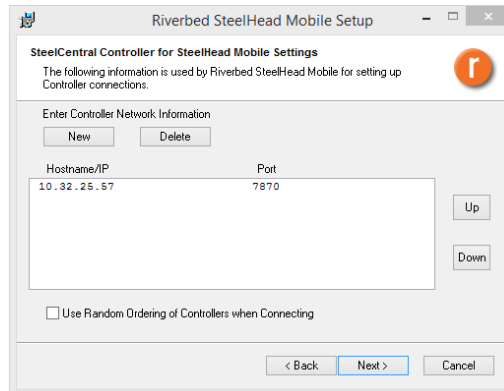
- *Typical Installation*
 - Jump to Step 7.

- *Advanced Installation*

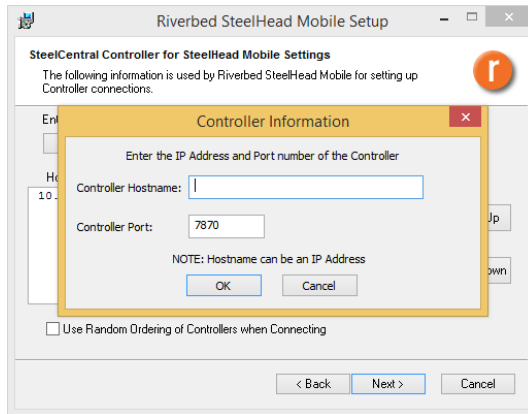
- Confirm that the destination folder is appropriate, then click *Next >*. If the Datastore folder is inappropriate, then click *Browse >*. Choose the appropriate folder from the menu, click *Ok >*, then click *Next >*.



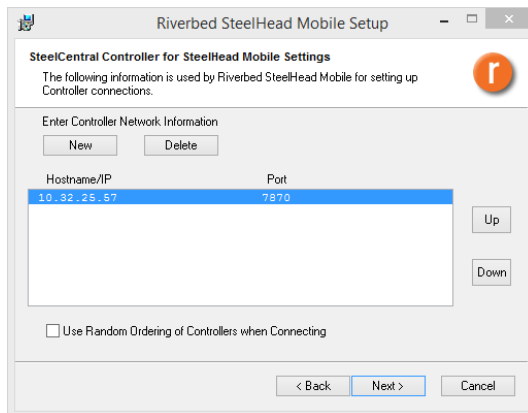
- Here you may choose to enter a *New* “Controller Network Information,” *Delete* an unwanted one, or take no action and click *Next >*.



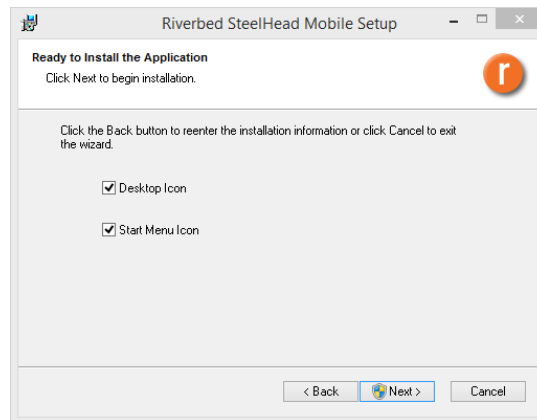
- To create a New Hostname: Click on *New*. Enter a “Controller Hostname” and then click *Ok*.



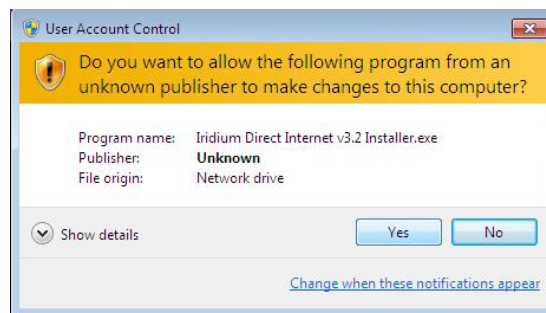
- To Delete an unwanted Hostname: Highlight a Hostname/IP line item. Click on *Delete*.



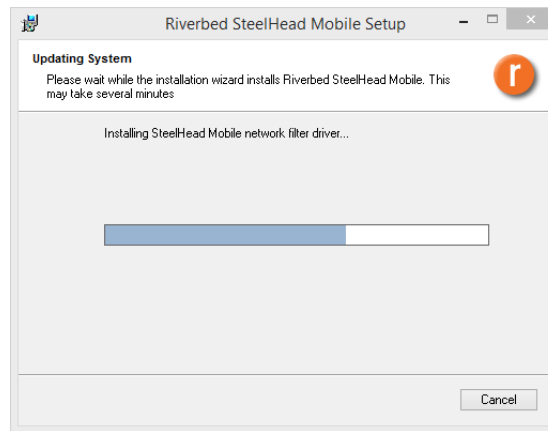
- 7) You may choose to select all, just one, or both options of shortcuts for the installed Riverbed.



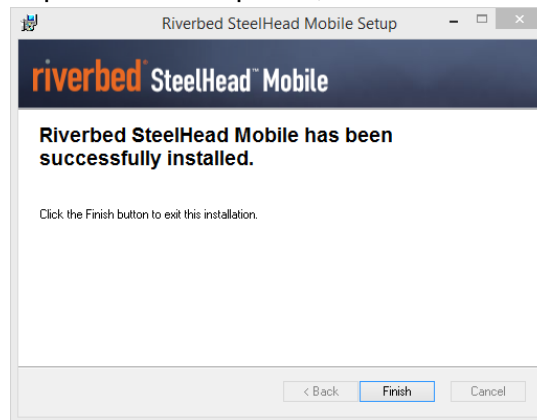
- 8) If User Account Control is enabled this window will appear, click Yes



- 9) This window shows the updating of sequencing and file copying for the Riverbed software on your system. If you need to stop this progression, then click *Cancel*.

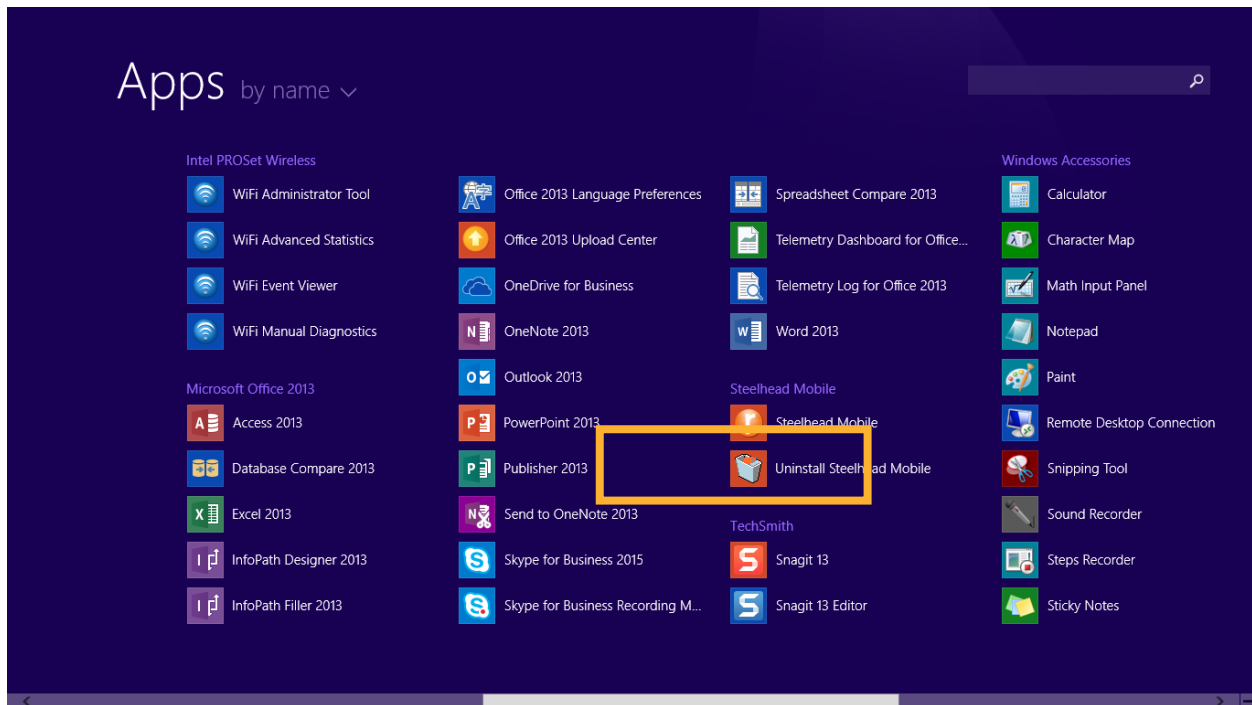


10) Once the System Update has completed, this window will appear. Click *Finish*.



❖ **Uninstall Riverbed SteelHead Mobile on a computer**

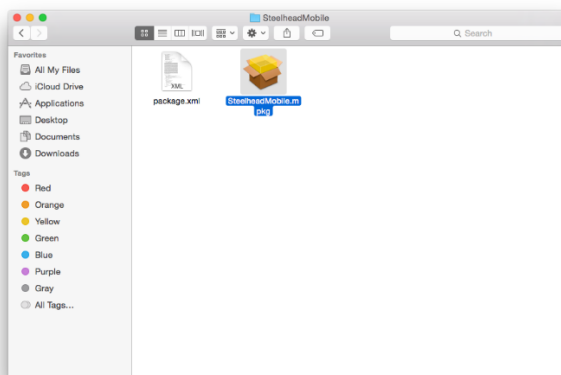
- 1) To Uninstall the Riverbed SteelHead Mobile application from your computer, navigate to the Apps window within the Start button and click **Uninstall SteelHead Mobile**.



E. Mac OS X Setup

❖ Install Riverbed® SteelHead™ Mobile on a computer.

- 1) Launch the SteelheadMobile.mpkg



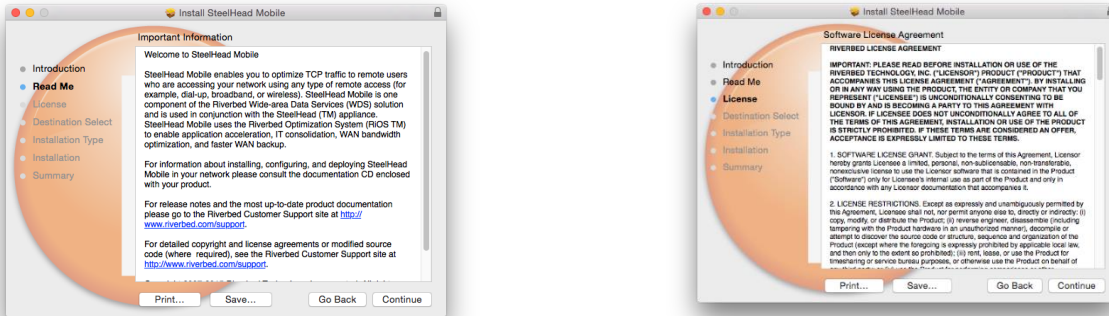
- 2) Users who have upgraded to Mac OS X El Capitan 10.11 or higher will see the following error message. Click *OK*.



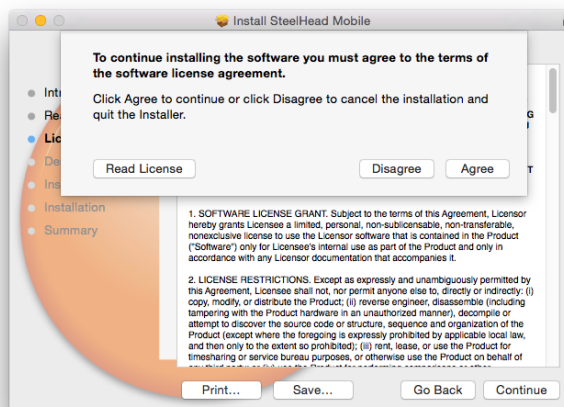
- 3) Once the *Install SteelHead Mobile* Window appears, click *Continue*.



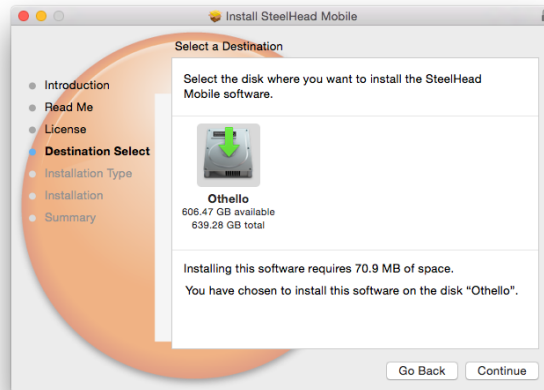
- 4) Read the message and agreement, print and/or save the information, and then click *Continue*.



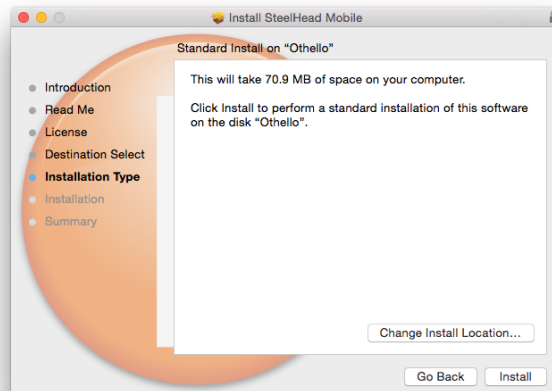
- 5) Click *Agree*



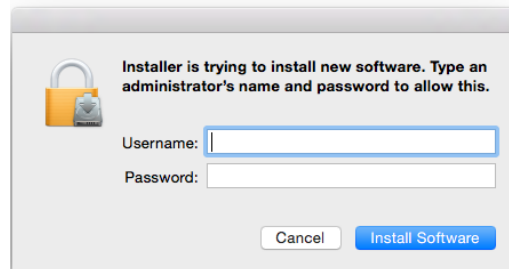
- 6) Confirm that the destination folder is appropriate, then click *Continue*. If the destination folder is inappropriate, then still click *Continue*. The following screen will allow you to change the Install Location.



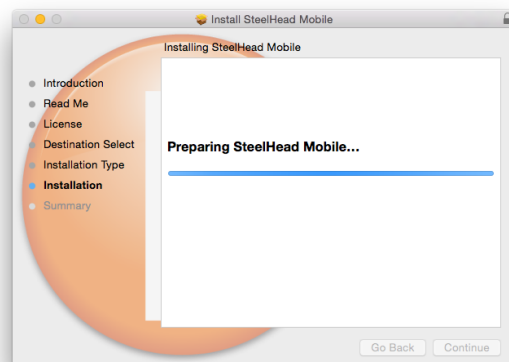
- 7) If the destination folder is appropriate, then click *Install*. If the destination folder is inappropriate, then click *Change Install Location* to choose a more appropriate location.



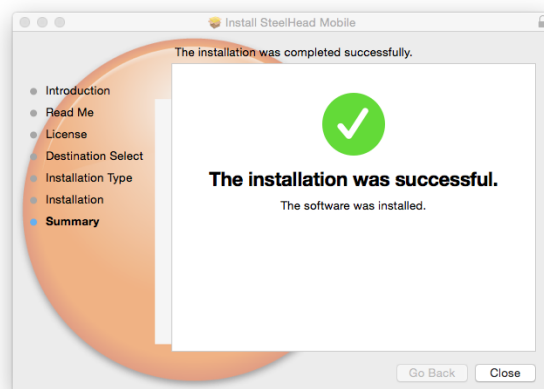
- 8) Enter the *Username* and *Password* connected to your computer's administration settings, then click *Install Software*.



- 9) The Installation will begin and will run through several screens that show the progress of the installation.



- 10) Once the Installation has completed, this window will appear. Click *Close*.



11) You will be able to find and launch the Riverbed client through your Applications folder.



❖ **Uninstall Riverbed SteelHead Mobile on a computer**

1) To Uninstall the Riverbed SteelHead Mobile application from your computer right-click the **Riverbed** icon in your **Applications** folder and click **Move to Trash**.

