



# OPTISOFT

 **ONEMail**

---

Guide d'utilisation rapide





# GUIDE D'INSTALLATION RAPIDE

© 2020 IEC Telecom.

All rights reserved. No parts of this work may be reproduced in any form or by any means - graphic, electronic, or mechanical, including: photocopying, recording, taping or information storage and retrieval systems - without the written permission of the IEC Telecom.

Products that are referred to in this document may be either trademarks and/or registered trademarks of the respective owners. The publisher and the author make no claim to these trademarks.

While every precaution has been taken in the preparation of this document, IEC Telecom. and the author assume no responsibility for errors, omissions or for damages resulting from use of information contained in this document or from the use of programs and source code that may accompany it. In no event, shall IEC Telecom. or the author be liable for any loss of profit or any other commercial damage caused or alleged to have been caused directly or indirectly by this document.

**Impression:** Octobre 2020




# PREFACE

The purpose of this guide is to provide you with a quick guide to **ONEMail**.

The guide aims to comprehensively cover everything you need to know from downloading, installing and initial configuration of the software, right through to detailed explanations of all operational aspects of the software.

The images in this document have been captured from a **Windows 10** operating system. If you are using a different operating system to the above, the images in this document may vary slightly.





# 1- TELECHARGEZ, INSTALLEZ ET CONFIGUREZ

Ce paragraphe va vous guider pour télécharger, installer et configurer OneMail. Avant de commencer vérifiez si votre appareil répond aux demande système minimum.

## DEMANDE SYSTEME MINIMUM

- Microsoft Windows 7 SP1
- Microsoft .NET Framework v4.6.2
- Processeur 1GHz
- 1GB RAM
- 5GB d'espace disque dur libre

Si votre ordinateur n'a pas Microsoft .Net Framework version 4.6.2 assurez-vous de sélectionner Additional Items dans Downloads page.

# 1-1. Téléchargez OneMail :

1. Téléchargez OneMail depuis la page du portail OneMail : <https://dashboard.iec-optisoft.com>
2. Vous pouvez vous connecter au portail en utilisant le login et mot de passe fourni par le support IEC Telecom.

**OPTISOFT**

OptiSoft Dashboard

Username GBIECOFFIC

Password .....

Log In

Contact our support team:

Middle East hotline: +971 (0)4 55 86 497  
Europe Hotline: +33 (0) 1 70363232  
Email: [support-global@iec-telecom.com](mailto:support-global@iec-telecom.com)  
WhatsApp: +971 50 242 42 38

[View list of our regional offices](#) ↵  
[Learn more about our value-added services](#) ↵  
[Visit iec-telecom website](#) ↵

Allez dans l'onglet **Downloads**, sélectionnez initial configuration et **Additional Items**

General OneMailPro OneCover eNOAD Downloads

Current Versions OneMail

▲ The current versions available for download require the Microsoft .Net Framework version 4.6.2 to be installed. If you do not have this installed or are unsure please select it from the Additional Items section at the bottom of the page.

Microsoft .Net Framework version 4.6.2 is compatible with most modern versions of the Windows operating system, however a full list of compatible versions can be found here: [https://msdn.microsoft.com/en-us/library/8z6wafww\(v=vs.110\).aspx](https://msdn.microsoft.com/en-us/library/8z6wafww(v=vs.110).aspx)

Use the options below to customise your download.

OneMail V1.20.0.0

What's New?  
Include in Download? Yes ▾

Cliquez sur **Start Download**

Additional Items

.NET4.6.2 Prerequisites

Start Download

## CONFIGURATION AUTOMATIQUE

Veillez noter que deux modes de configuration automatiques à préparer en avance sont disponibles :

### CONFIGURATION INITIALE

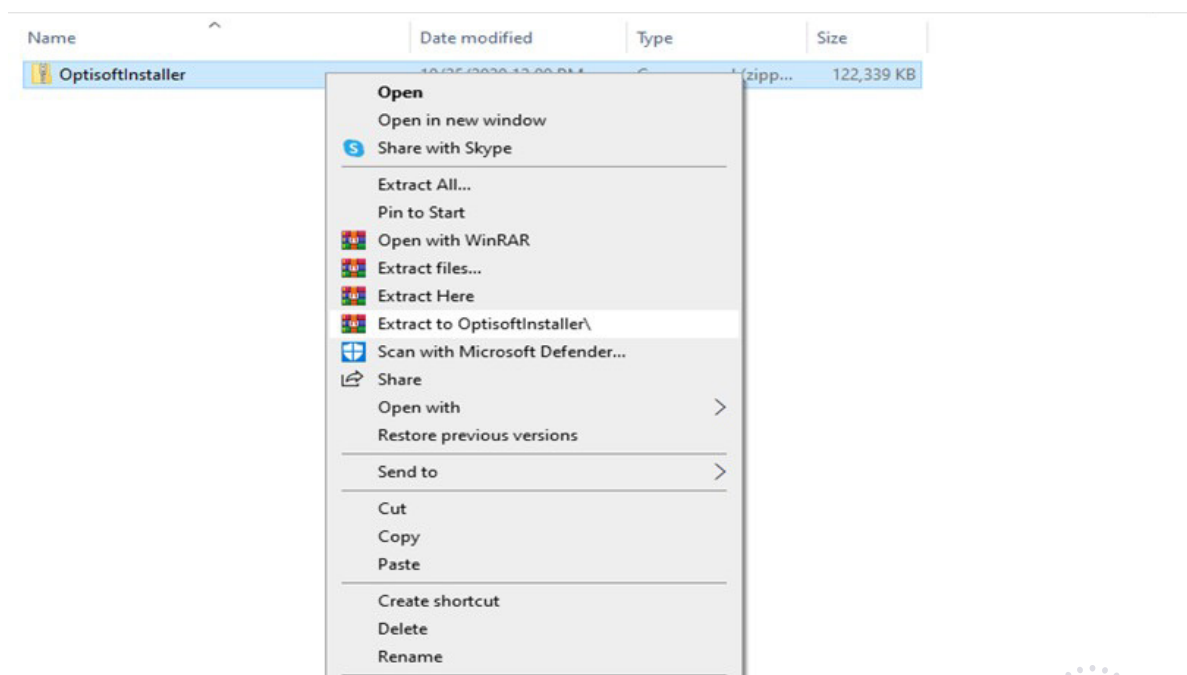
Un fichier est inclus dans l'installateur téléchargé qui remplit automatiquement les informations du bateau et du compte.

### CONFIGURATION ETENDUE

Un fichier est inclus dans l'installateur téléchargé qui configure automatiquement OneMail en fonction de paramètres configurés dans le portail OneMail.

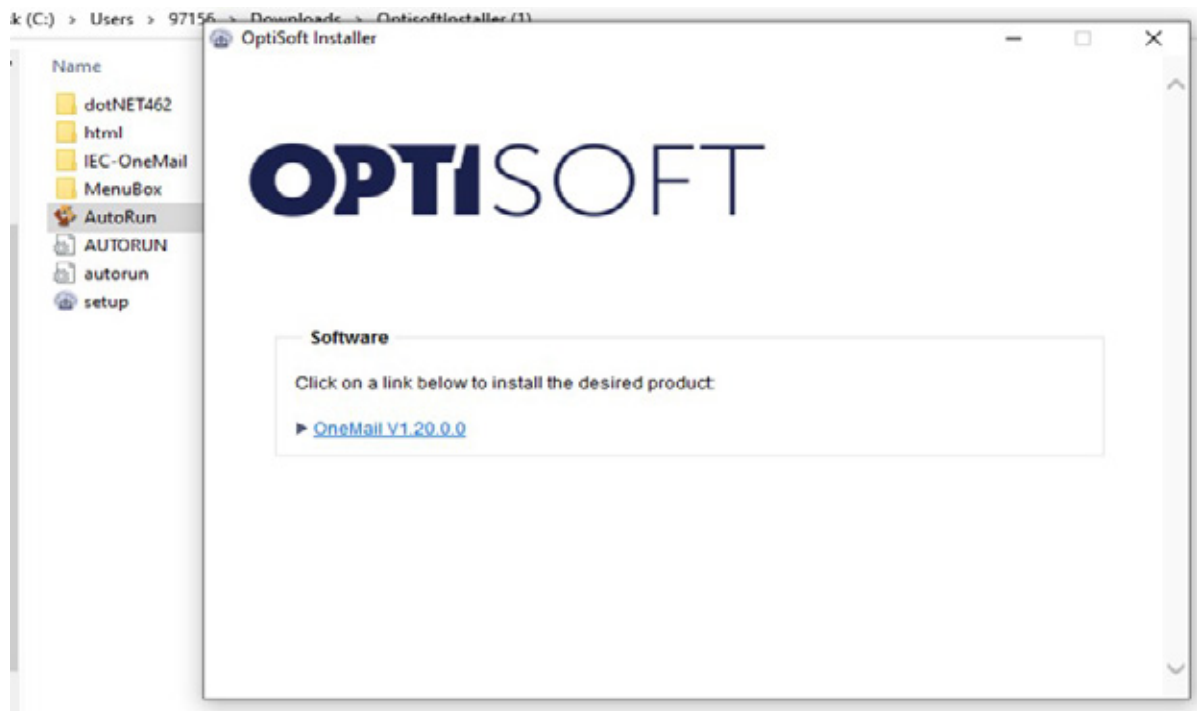
## 2-Installez OneMail :

1. L'installateur est dans une archive. La première chose à faire est d'extraire l'archive ONEMail.zip





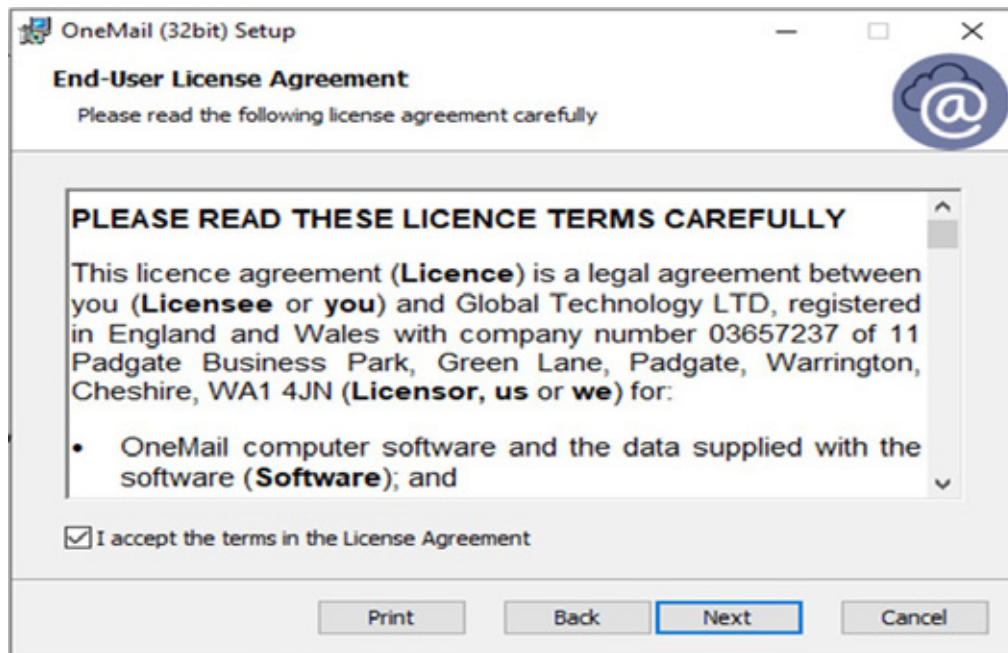
2. Cliquez sur **AutoRun** et dans la fenêtre qui s'ouvre sur le lien OneMail pour continuer l'installation :



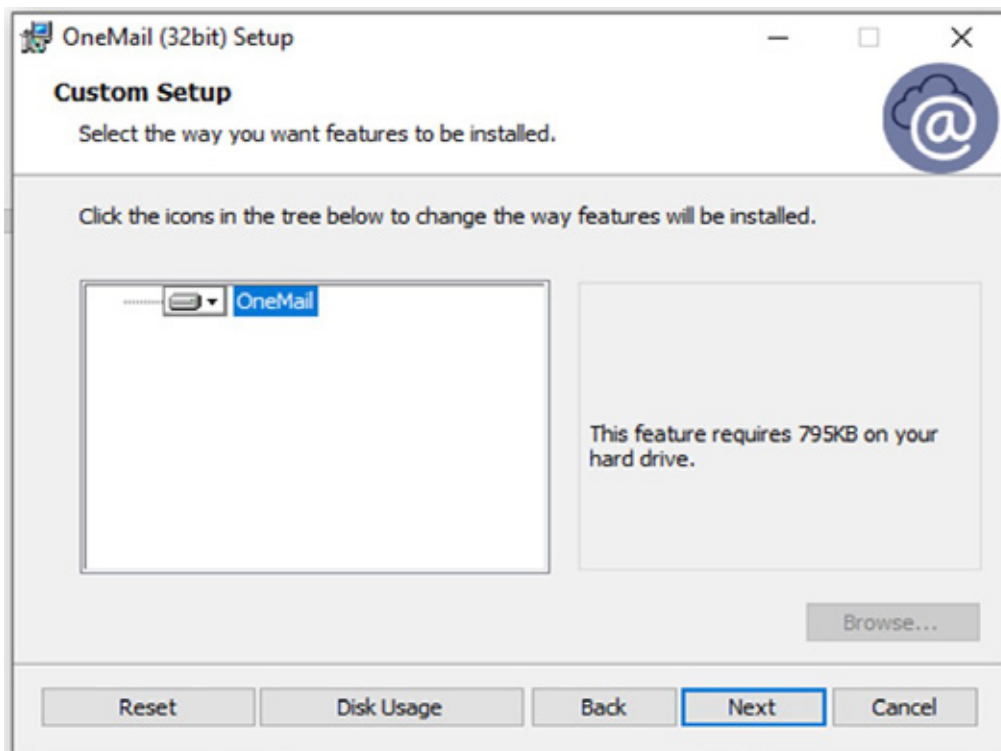
3. Cliquez sur **Next** :



4. Si vous acceptez les termes de la licence, cochez **I accept** puis cliquez sur **Next**

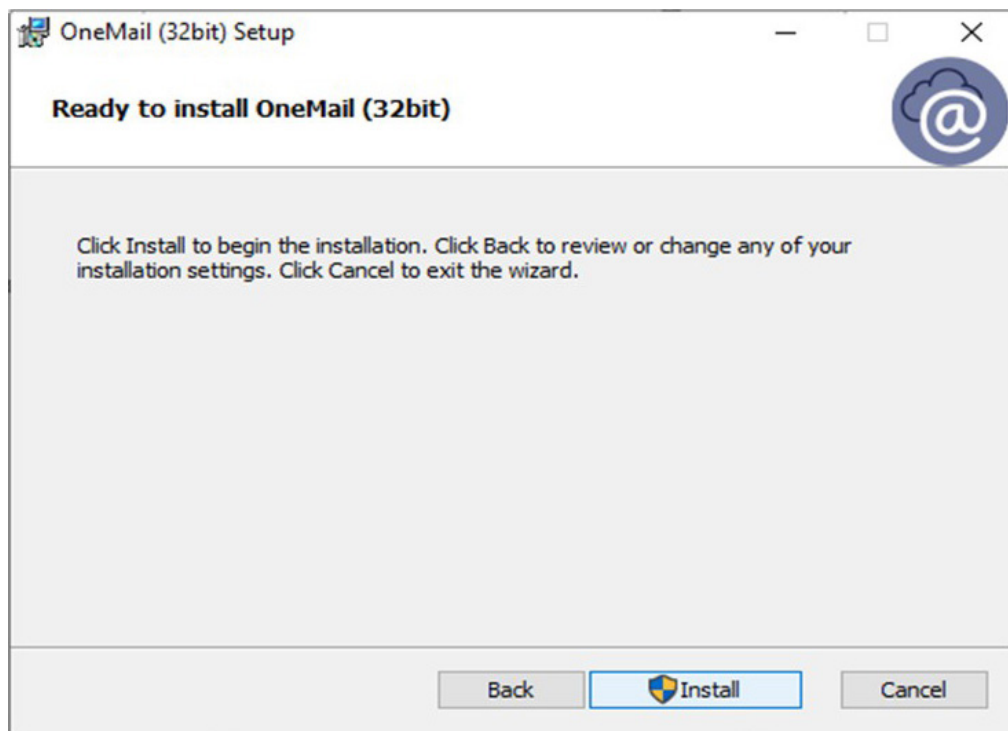


5. Cliquez sur **Next** :



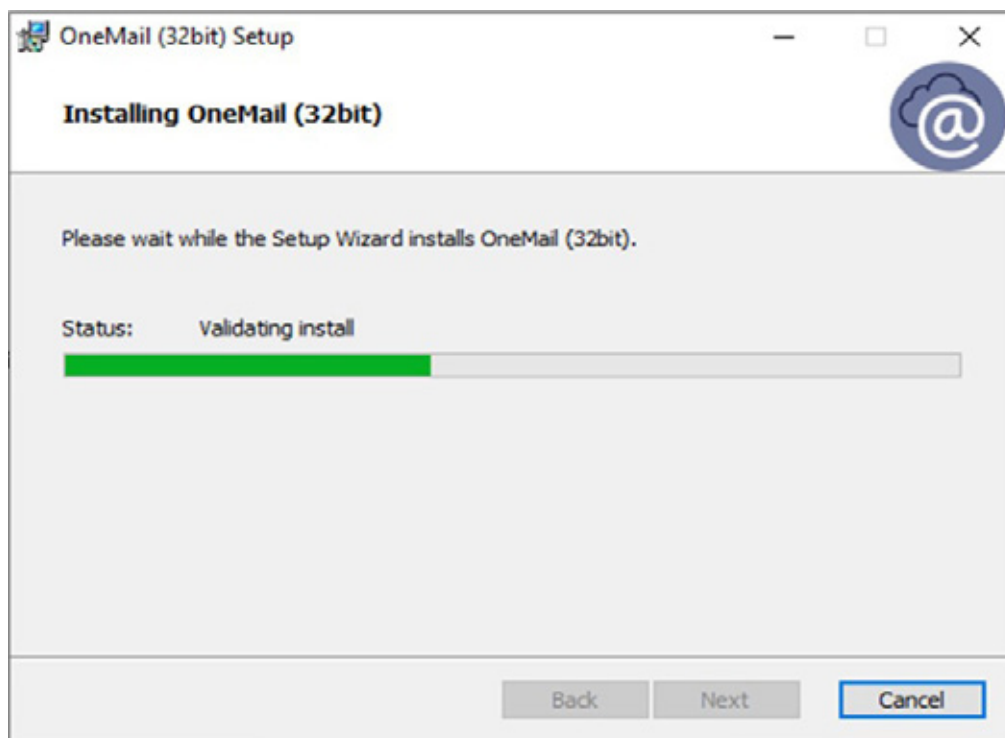


## 6. Cliquez sur Install:

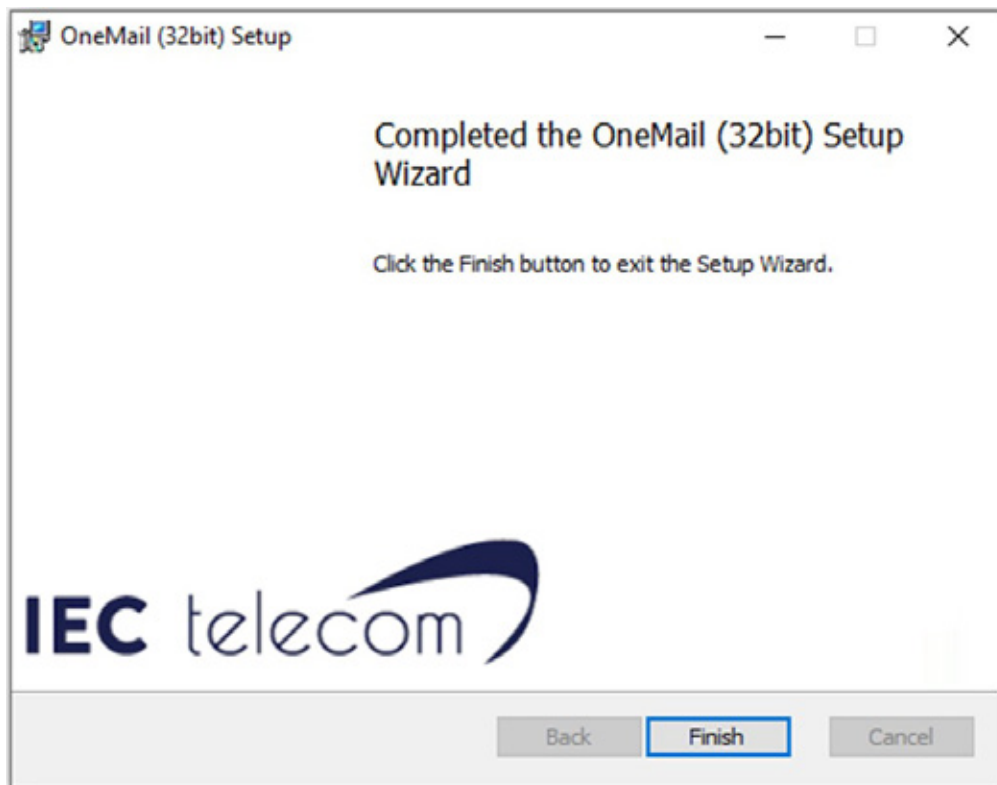


**OneMail** va maintenant s'installer sur votre ordinateur.

L'installation peut prendre quelques minutes.



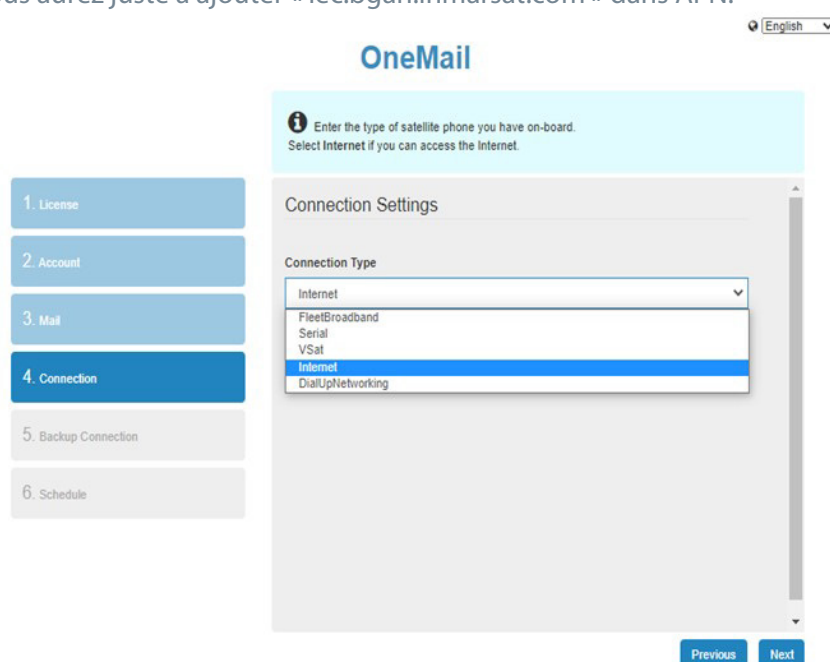
## 7. Cliquez sur Finish



Votre navigateur Web va s'ouvrir sur l'adresse <http://localhost:52080/setup/> configure.

### 1. Sélectionnez le type de connexion que vous utilisez et cliquez sur Next

Pour un téléphone Iridium, sélectionnez SERIAL puis Iridium 9555. Pour un IsatPhone, sélectionnez SERIAL et IsatPhone Pro. Pour un téléphone Thuraya sélectionnez DIAL UP Networking et Marine Star. Pour un Sailor FBB 250, ou un Sailor Fleet one sélectionnez Fleet Broadband. Vous aurez juste à ajouter « [iec.bgan.inmarsat.com](http://iec.bgan.inmarsat.com) » dans APN.



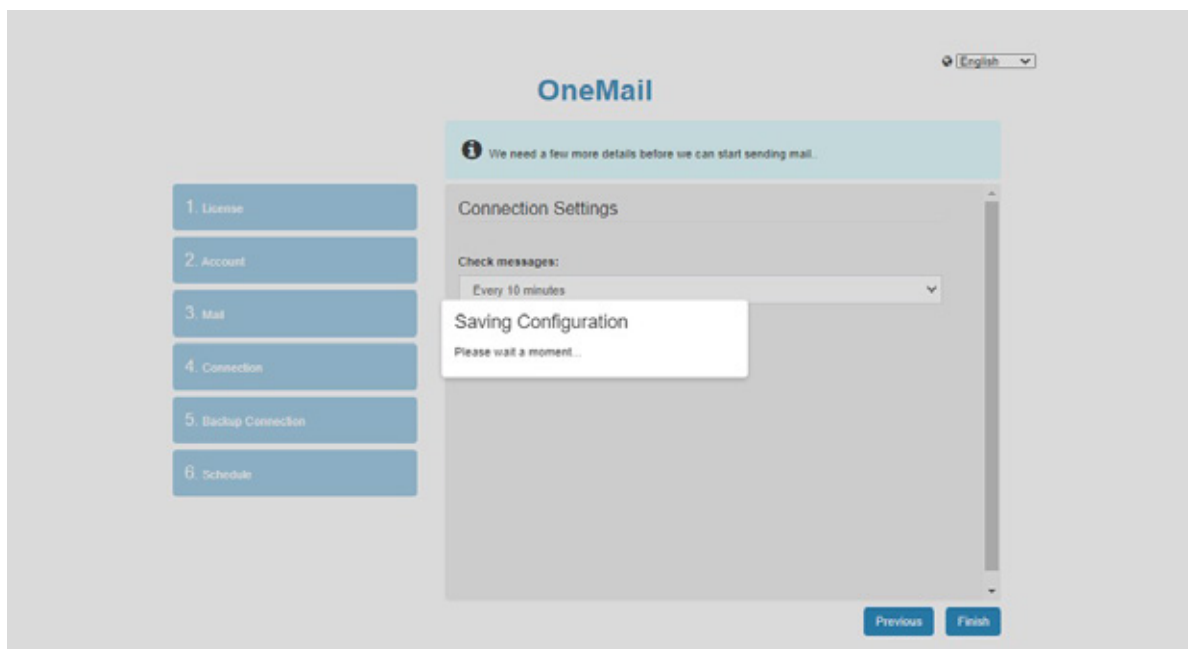
**2. Si vous souhaitez une connexion secondaire, sélectionnez la, si non laissez None et cliquez sur Next**

The screenshot shows the 'OneMail' interface with a sidebar on the left containing six steps: 1. License, 2. Account, 3. Mail, 4. Connection, 5. Backup Connection (highlighted in dark blue), and 6. Schedule. The main content area is titled 'Backup Connection' and features a light blue header with an information icon and the text 'This is a backup and used if primary connection is not working'. Below this is a 'Connection Type' dropdown menu with the following options: None (selected), FirstBroadband, Serial, V-Sat, Internet, and DialUpNetworking. At the bottom right of the main area are 'Previous' and 'Next' buttons. A language dropdown menu in the top right corner is set to 'English'.

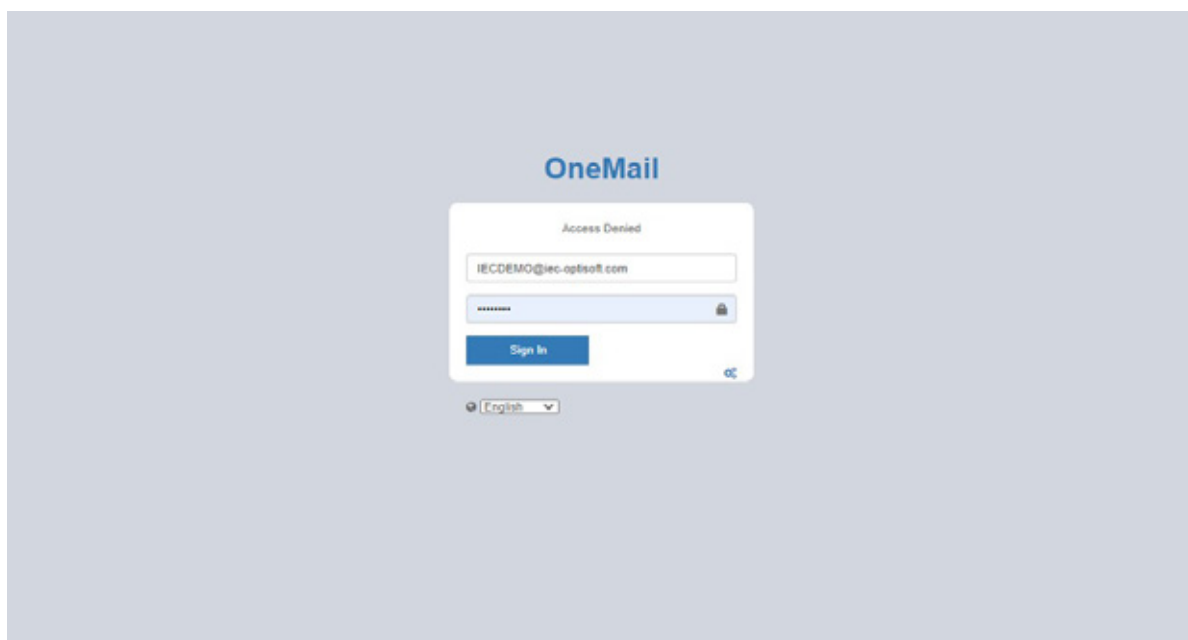
**3. Sélectionnez l'option de vérification et cliquez sur Finish:**

The screenshot shows the 'OneMail' interface with the same sidebar as the previous screen. The main content area is titled 'Connection Settings' and features a light blue header with an information icon and the text 'We need a few more details before we can start sending mail.'. Below this is a 'Check messages:' dropdown menu with the following options: Every 10 minutes (selected), Manually only, Every 5 minutes, Every 30 minutes, Every Hour, Every 2 Hours, Every 3 Hours, Every 6 Hours, Every 12 Hours, and Once a day. At the bottom right of the main area are 'Previous' and 'Finish' buttons. A language dropdown menu in the top right corner is set to 'English'.

Patiencez pendant l'enregistrement de vos paramètres :



Vous pouvez maintenant vous connecter :





# CONTACTEZ-NOUS

---

Pour toute assistance, contactez le centre de support 24/7 d'IEC Telecom :

Moyen-Orient : +971 (0)4 55 86 497

Europe : +33 (0) 1 70363232

[support-global@iec-telecom.com](mailto:support-global@iec-telecom.com)

